

THE CHRONICLE

SUMMER 2023

HONOR PAST AND PRESENT DAIRY LEADERS. INSPIRE FUTURE DAIRY LEADERS. RECORD DAIRY INDUSTRY HISTORY. PROMOTE THE DAIRY INDUSTRY.



Living our Mission

As we turn the page on the first half of 2023, we present to you the latest version of The Chronicle. You may notice a bit of a difference in this version from previous years. Here's why.

The Dairy Shrine fiscal year ends on July 31, coinciding with the timing of the delivery of this Chronicle. We thought it made sense, then, to make the summer version of The Chronicle as more of an annual report. As you'll see as you peruse this issue, we've covered many of the programs and activities that have been accomplished by the Dairy Shrine over the past 12 months.

There's a significant amount to talk about. There have been award recipients and schol-

arship winners. More than 100 new members have been added to the organization. And we have several new programs in place to make sure that our mission is accomplished every day.

A few years ago we developed a long range plan guided by the results of a membership survey. New programs and initiatives are part of implementing the strategies outlined in that plan. I'm proud of the discipline shown by the Dairy Shrine Board of Directors to stick with this plan, and I'm excited about future activities to continue our progress.

As always, we encourage your feedback to help your organization stay on its path. Send



Mike Opperman
Dairy Shrine
Executive Director

your comments to me at info@dairyshrine.org, and we hope you enjoy this newest version of The Chronicle! ●

CONTENTS

3
Guest of Honor



4
Distinguished Dairy
Cattle Breeder

8
2023
Accomplishments



10
Farm Plaque
Program



ON THE COVER

The precious moment captured on our cover is 6-year old Blake Stambaugh with her very first heifer calf. Her parents own Pheasant Echos Farm in Westminster, Maryland.



National Dairy Shrine is a non-profit organization devoted to maintaining the strength of the dairy industry through recognition, encouragement, promotion, education and preservation of the dairy history of previous generations. Founded in 1949, the National Dairy Shrine has thousands of lifetime members consisting of dairy producers, scientists, students, educators, marketers, sales people, consultants, journalists, cheese makers and other dairy enthusiasts who are passionate about the dairy industry.



Hansen Named Guest of Honor

Dr. Les Hansen has been selected as the 2023 Dairy Shrine Guest of Honor. This award recognizes exemplary dairy leaders for their accomplishments and contributions to the dairy industry. It's the highest level of recognition awarded by the Dairy Shrine.

Dr. Hansen currently serves as a Distinguished Teaching Professor at the University of Minnesota. While his research, teaching, advising, and volunteering has been based primarily at the University of Minnesota, his work has created a profound ripple effect across the dairy industry. He is regarded as a world expert on dairy cattle genetics—especially with regard to crossbreeding—and is a dedicated and highly respected researcher. As a master at turning technical information into an engaging and relatable presentation, he is a popular choice for speaking to dairy producer audiences internationally. Over 20 years, he has made 45 trips to 21 countries as an invited speaker, sharing his research with both scientific and dairy producer audiences.

Dedicated to youth

In addition to conducting and disseminating internationally impactful dairy cattle genetics research, Dr. Hansen has dedicated his career to the success of 4-H youth, dairy science students, graduate students and intercollegiate dairy cattle judging teams. He has a knack for motivating youth to commit the time necessary to be successful in collegiate dairy cattle judging. Students enjoy participating in his judging program because practices are nurturing and supportive. Apart from sustained success in contests, the outcome has been self-confidence, public speaking skills, decision-making skills, teamwork and many other skills of benefit to his students.

Dr. Hansen's graduate students' success speaks volumes of his passion for dairy cattle genetics. They're making ongoing contri-

butions to the dairy industry through AI companies and academia, including Trans Ova Genetics, ABS Global, Zoetis, URUS, the University of Maine, and more.

Within the American Dairy Science Association, Dr. Hansen is the only person in history to ever be presented with three prestigious awards: the dairy production teaching award, the research award for respective area for research, and the Hoard's Dairyman youth development award. These recognitions are just a small sampling of Dr. Hansen's honors over the years. Other awards include the Morse-Alumni distinguished teaching award from the University of Minnesota and the distinguished service award from Minnesota DHIA.

John Meyer, CEO of Holstein Association USA says, "Dr. Hansen is one of the most recognized dairy cattle geneticists in the world. His curious mind, willingness to take on complex, and at times controversial subjects has helped to expand the minds of dairy cattle breeders around the globe."

Mike Schultz has had the privilege of working with Dr. Hansen both as one of his students and as a colleague at the University of Minnesota. He says, "As with many influential research scholars, the legacy of Dr. Hansen's efforts rests in the continuation provided by an accomplished group of graduate students. A hallmark of his philosophy of training graduate students is to recruit students with a 'feel' for dairy cattle and their management, to mentor



Dr. Les Hansen

them and provoke thought, and to turn them loose to investigate issues of contemporary importance. While he has been magnificent at championing and promoting the work of his students, the true impact of the students' work is continued in their future careers."

Dr. Hansen will receive the Guest of Honor award at Dairy Shrine's Awards Banquet on Monday, October 2nd in Madison, Wisconsin. His portrait will be displayed in Dairy Shrine's Dairy Hall of Fame and Museum in Fort Atkinson, Wisconsin. ●

Excellence Across Four Breeds Highlights Distinguished Dairy Cattle Breeder

The Dairy Shrine presents the honor of Distinguished Dairy Cattle Breeder to the Jerry and Phyllis Luttrupp family of Lost-Elm Farm, Berlin, WI. The Luttrupp family earned this annual award as a progressive dairy breeder who excels in managing their dairy herd based on sound genetic and business principles.

Over the last four decades, Lost-Elm Farm has been home to four breeds. Jerry and Phyllis initiated Lost-Elm Farm upon Jerry's return home from Vietnam in 1972 where Jerry earned the Bronze Star Medal for Heroism as an Army Sergeant. Jerry purchased some Ayrshire calves from his father, and the pair purchased some Holstein cows from Phyllis's father. They built their herd up to 70 registered All-American milking Holsteins. The first Brown Swiss entered the herd as a 4-H project, sparking the transition to all Brown Swiss. Their son Jason currently manages the herd, which he has shifted to primarily homebred, All-American, production and index leading Jerseys.

A family affair

Jerry and Phyllis's children are Jeff, Jason, Jodi and the late William. The family's dedication to the dairy industry is evident in the educational paths they chose. Jeff and Jason attended UW-Madison Farm and Industry Short Course, and Jodi studied Dairy Science and Life Sciences Communication at UW-Madison.

The family can claim a myriad of accolades across the global dairy industry as well as within their local community. Jerry is a lifetime 4-H leader and coached the Berlin FFA judging team to a win in the national judging contest. Some of the committees he served include the Wisconsin Holstein Association Sale Committee and the Wisconsin Brown Swiss Association board of directors. Over the years, he also achieved countless recognitions both for the farm and individually. Phyllis volunteers at the Berlin hospital, and the couple has also served the town of Aurora. Jeff won his state FFA degree in dairy proficiency.

Both Jeff and Jodi found success in the showing in showmanship and with the family's award-winning show herd.

Lost-Elm Farm has been named Premier Breeder eight times and earned several Champion and All-American honors at shows across the country. They've owned over 106 Excellent Jerseys, 54 Excellent Brown Swiss and 28 Excellent Holsteins – a large percentage of which have been home bred.

They built their legacy by connecting with other successful and established herds and making key, strategic purchases which would disseminate excellent genetics throughout their herd. Notable cows they developed in the early '80's include LOST-ELM ROCK-ETS BINGO and LOST-ELM BOOTMAKER JOY. More recently, LOST-ELM COLTON SATURN EX 95 has earned recognition at the Wisconsin Summer Championship Show and World Dairy Expo. LOST-ELM PRELUDE PIXY-ET 2E 92, and LOST-ELM GLAMOUR are a few more of the Luttrupps' prominent homebred cattle.

Growth through ET

The Luttrupps' early leap into ET technology allowed them to make 48 bulls in three breeds for sampling in AI, and to complete numerous embryo export orders. ET calves helped grow the genetic progress of the herd and expand domestic marketing opportunities. Because each breed has its own unique differences and marketing opportunities, as the breeds in the herd have changed, so has the breeding philosophy. The program has shifted from a focus on dairy strength with the index system to showing type and longevity. One constant throughout the years and various breeds has been a focus on cow families. Many of the Jersey cows in the barn today are backed by 10 or more generations of Excellents. In 2021, 38



Jerry and Phyllis Luttrupp

Lost-Elm Jerseys classified Excellent – and 32 of them were homebred. The current average classification score on their herd of Jerseys is over 90 points.

Kristin Paul, Director of Field Services for the American Jersey Cattle Association says, "While the cows are great, the best part of working with Lost-Elm is the people. I have always appreciated the honesty and integrity of their family. Jerry and Jason are thorough, accurate and fair in everything they do. They are diligent and work hard to achieve and surpass their goals but are very humble in the process."

Kevin Jorgensen, Senior Holstein Sire Analyst adds, "Some of the best breeders take one breed and make that their life's work, but there are a few that can excel at multiple breeds and be at the top of all of them. That would describe the Luttrupps at Lost-Elm."

The Luttrupps will receive the Distinguished Dairy Cattle Breeder award at Dairy Shrine's Awards Banquet on Monday, October 2nd in Madison, Wisconsin. Their portrait will then be displayed in National Dairy Shrine's Dairy Hall of Fame and Museum in Fort Atkinson, Wisconsin. ●



Pioneers Lauded by Dairy Shrine

Dr. George Heersche, Jr. (posthumously), Dr. Richard Saacke, Dr. Charles Sniffen and Dr. Pearse Lyons (posthumously) are the 2023 recipients of the National Dairy Shrine's Pioneer Award. This award recognizes dairy industry leaders who have made significant contributions to dairy throughout their lives.

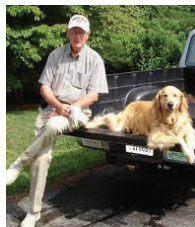
Dr. George Heersche, Jr. began his 45-year tenure as a dairy industry leader in the Cooperative Extension Service in South Dakota. He moved on to spend the majority of his career as an Extension Professor at the University of Kentucky Cooperative Extension Service. His notable accomplishments include developing the Heersche/Corbin Synchronization program and working with AI companies to assist with AI trainings.



Heersche

Dr. Heersche was also known for his passion for and leadership in dairy youth programs. For decades, he led the Kentucky 4-H dairy program. He coached three national champion 4-H dairy judging teams and served on the National 4-H Dairy Cattle Judging Contest Committee for many years. In 2008, he received the prestigious Hoard's Dairyman Youth Development Award, presented by the American Dairy Science Association.

Dr. Richard "Dick" Saacke has been known for his kindness, sincerity and humility his entire life. He earned his B.S. in Animal Science from Rutgers University, and M.S. and Ph.D from Pennsylvania State University. He also served in the U.S. Army in between earning his graduate degrees. His influence in the dairy industry is made up of groundbreaking sire fertility research and guidance of 23 graduate students. He has authored or co-authored more than 100 peer-reviewed publications.



Saacke

Thanks to his extensive research into sire

fertility and semen quality, Dr. Saacke is a highly valued ally and consultant in the AI industry. Twice, he was invited to speak at the National Association of Animal Breeders Technical Conference on Artificial Insemination and Reproduction. He is often requested to evaluate and critique semen collection and quality control procedures of many AI centers. Trade secrets are often shared without reservation due to his impeccable character and integrity. He has been recruited as a third-party mediator in disputes regarding semen quality standards among international barterers.

As a member in a plethora of scientific societies, Dr. Saacke has also served as a reviewer for seven major journals and a grant reviewer for many industry and government entities. His research contributions have been recognized by countless publications.

Dr. Charles (Charlie) Sniffen is truly a pioneer in dairy cattle nutrition, through his legacy of contributions to protein and amino acid nutrition, understanding of rumen function and optimizing diet formulation for high-producing dairy cows.



Sniffen

His ultimate goal was to quantitatively predict metabolizable protein and amino acid supplies to the cow and their impact on lactation performance. His dedication to this research has resulted in an impressive 158 peer-reviewed publications, 129 abstracts, and 368 articles in conference proceedings and extension publications. Dr. Sniffen holds the unofficial record for the most published peer-reviewed papers on original research in ruminant protein and amino acid nutrition.

Of equal importance to his own research were the 43-plus students that Dr. Sniffen mentored over the years, amplifying the industry's continued advancement and understanding of ruminant nutrition. Many of these students have moved into academic positions and have trained additional students, continuing the tradition of inquiry and problem-solving.

Dr. Pearse Lyons immigrated to the United States in the late 1970's. He founded Alltech from his home garage with \$10,000. His company's vision remains true to this day, with a global team of more than 6,000 people focusing on improving animal, crop and human health and performance. It remains the only privately held and family-owned business among the top animal health companies in the world.



Lyons

Dr. Lyons was first and foremost an entrepreneur and tireless innovator with a keen scientific mind. He was widely regarded as an inspirational leader and communicator, living each day with passion and purpose. He has been widely recognized for his contributions to science and industry and was awarded honorary doctorates from many colleges and universities around the world. Because of their belief in lifelong learning, his wife and he funded and oversaw construction of more than a dozen state-of-the-art laboratories at primary schools in Kentucky and Ireland. A particular interest in budding scientists and entrepreneurs led to the establishment of the Alltech Young Scientist program: the largest global agriscience competition of its kind. It has engaged more than 100,000 university students.

Dr. Saacke, Dr. Sniffen and the families of Dr. Heersche and Dr. Lyons will receive the Pioneer awards at Dairy Shrine's Awards Banquet on Monday, October 2nd in Madison, Wisconsin. Portraits of each winner will then be displayed in National Dairy Shrine's Dairy Hall of Fame and Museum in Fort Atkinson, Wisconsin. ●

For full releases on each of the Guest of Honor, Distinguished Dairy Cattle Breeder, and Pioneer award winners, visit www.dairyshrine.org/news or click on this QR Code.



Dairy Shrine Awards \$48,500 in Scholarships

Forty-one dairy students from across the U.S. are receiving a total of \$48,500 in scholarships from the National Dairy Shrine. In addition, seven outstanding collegiate dairy students will each receive a \$1500 scholarship through the Klussendorf Association and the McKown/Klussendorf Fund. All scholarship recipients will be recognized at the Dairy Shrine awards banquet on Monday, October 2 in conjunction with World Dairy Expo. ●

To read a full press release about scholarship winners, visit www.dairyshrine.org/news (one release each for the Dairy Shrine scholarships and Klussendorf/McKown scholarships).

Senior Student Recognition Scholarships



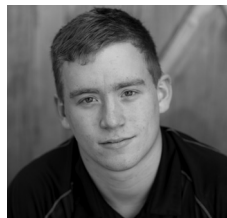
Ashley Hagenow
University of Minnesota



Miriam Cook
Purdue University



George Sebright
Virginia Tech University



Zach Schilter
University of Minnesota

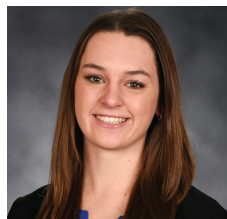


Clarissa Gross
University of Wisconsin-Madison

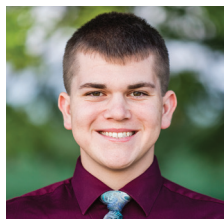


Sophy Henisz
University of Wisconsin-Madison

Mike Lancaster Sophomore Merit Scholarships



Kylie Konyn
University of Wisconsin-Madison



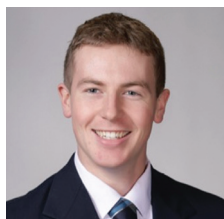
Ben Styer
University of Minnesota



Megan Ratka
University of Minnesota



Sara Hagenow
University of Minnesota



Aidan Ainslie
Cornell University



Haven Hileman
Ohio State University

Merton Sowerby Junior Merit Scholarship



Doreen Dyt
California Polytechnic University



Gracelyn Krahn
University of Wisconsin-Madison



Kendal Jenkins
Pennsylvania State University



Jack Hammock
Virginia Tech University



Elise Bleck
University of Wisconsin-Madison

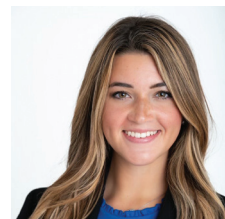


Nicole Broege
University of Wisconsin-Madison

Klussendorf Scholarships



Hayley Daubert
South Dakota State University



Regan Jackson
Louisiana State University

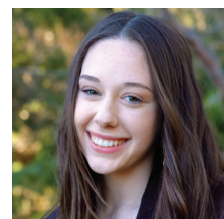


Regan Kramer
Iowa State University

Kildee Scholarship



Kelsey Pasch
Michigan State University



Ashley Waymire
California Polytechnic University



NDS/DMI Education & Communication Scholarships



Margaret Molitor
South Dakota State University



Jaiden Cain
Virginia Tech University



Luke Borst
University of Minnesota



Natalie Roe
University of Wisconsin-Madison



Madison Sifford
Virginia Tech University

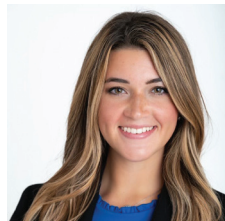
Maurice Core Scholarships



Clarissa Ulness
University of Wisconsin-Madison



Hayley Daubert
South Dakota State University



Regan Jackson
Louisiana State University



Delana Erbsen
Iowa State University



Madelyn Hoffman
Cornell University



Laken DuRussel
Michigan State University

Iager Scholarships



Samuel Mess
Fox Valley Tech



Naomi Scott
Kaskaskia College

NDS/DMI Milk Marketing & Dairy Products Scholarships



Eliza Endres
University of Minnesota



Madeline Denlinger
Pennsylvania State University



Ashlyn Sarbacher
University of Wisconsin-Platteville



Libby Swatling
Cornell University



Raegan Kime
Iowa State University

Marshall McCullough Communications Scholarships



Lauren Breunig
University of Wisconsin-Madison



Jordan Anderson
University of Wyoming



Makenzie Alberts
South Dakota State University

McKown Scholarships



Emory Bewley
Pennsylvania State University



Delana Erbsen
Iowa State University



Garrett Hastings
The Ohio State University



Clarissa Ulness
University of Wisconsin-Madison



2023 Accomplishments

A strategy outlined in the long range plan calls for the development of a committee structure for activities related to the Dairy Shrine. There are six active committees, each led by a member of the Executive Committee. The committees are: Communications, Outreach, Museum, Finance, Events and Operations. Following are reports for each committee, reflecting activities that have been accomplished throughout Fiscal Year 2023.

Communications

The backbone of the communications committee is the social media committee, which is made up of six college students spread across the country. Those students are: Regan Kime from Iowa State University, Samantha Gambonini from Cal Poly, Gracie Krahn and Kylie Konyon from the University of Wisconsin-Madison, Michelle Stangler from University of Wisconsin-River Falls and Madison Sifford from Virginia Tech. This exceptional group of young people come up with social media ideas, create social media posts and seamlessly network with each other. That team has created more than 65 posts in the past year and grown our engagement to more than 3,400 page likes. They have also spread our social media presence across Instagram and LinkedIn.

Another key element of the communications committee was the creation of the Dairy Shrine video. This video, produced by Ryan Ebert, was funded by a grant made possible by the Professional Dairy Producers Foundation. The video, which is just over six minutes long, focuses on how Dairy Shrine follows its mission as depicted by three prominent industry professionals. To speak about inspiring youth, Ashley Hagenow, a recent University of Minnesota graduate and current Alice in Dairyland as well as the first student Dairy Shrine board member, spoke of how earning scholarships impacted her college experience. John Meyer, Holstein Association USA CEO and past Guest of Honor recipient, commented on what it means to honor current leaders. And Corey Geiger, Hoard's Dairyman editor, discussed what it means to preserve dairy history through the museum. If you would like to watch the video, visit the Dairy Shrine YouTube channel or scan on the QR code on this page.

For the next year Dairy Shrine communications will continue to evolve. You have the latest version of The Chronicle in your hands, and we hope you enjoy the new format. We will also continue with more regular monthly communications via the electronic version of The Chronicle sent via email.

Outreach

The outreach committee is focused on reaching out to members and industry stakeholders with programming to encourage engagement with the organization.

Last year our first Dairy Shrine student chapter was started at South Dakota State University. That organization continues to grow on campus and has been active in the South Dakota dairy industry. This year the



Our student luncheon will be the Monday of World Dairy Expo, providing career development for young professionals.

organization gave Dairy Shrine memberships to graduating seniors, awarded a distinguished service award to a South Dakota dairy producer and played an active role in promoting dairy on campus among other chapter activities. This enthusiastic group continues to grow and we hope more chapters sprout up across the country.

Along the lines of inspiring youth, one program that began this year is a young professionals group. This group, led by a subcommittee of young professionals, provides programming to college students and young people within the first five years in their dairy careers. We conducted a survey of a group of young people to determine a preferred method of communication. An in-person event was preferred, in addition to email communications and webinars. We've begun by providing regular career development information through an e-newsletter and will host an in-person event on Monday of World Dairy Expo.

We also work to engage with industry stakeholders who would be willing to support Dairy Shrine financially. These corporate representatives are encouraged to support a variety of activities related to funding scholarships, sponsoring memberships, supporting activities at the museum and other endeavors. A list of

companies that supported Dairy Shrine this past year is listed within this Chronicle. As you interact with members of these companies please thank them for their support! ●



Behind the scenes from newly made Dairy Shrine video with prominent industry professionals.

Join us at World Dairy Expo!

Monday Oct. 2, 2023

Lunch: Student Luncheon

4pm: Annual Meeting

5pm: Banquet Reception

6pm: Annual Awards Banquet

Stop by our booth in the Coliseum any time during the week!



Museum and Finance Committees

As the name suggests, the museum committee is tasked with ongoing updates to the National Dairy Shrine museum in Fort Atkinson, Wisconsin. Annually more than 15,000 visitors tour the museum, and this past year the committee has developed a strategic plan for improving the experience for each of those visitors. Here are a few things the committee is working on:

- **Digital cow champions:** The photo display of the history of champion show winners of each breed will evolve to an interactive digital display. This will allow visitors to search for cows dating back to the turn of the 20th century and see how cows in each breed have changed over time. This display was supported through donations by several of the breed associations.
- **Display updates:** The basement of the museum will be updated to enhance the story of the dairy industry. Part of the display will cover the history of various aspects of dairy management: nutrition, breeding, animal husbandry, dairy testing, cheese and butter making and more. The other half will show what modern dairy farming represents today. Various companies throughout the dairy industry will support this effort and will be recognized for their contributions.
- **Farm plaques:** A new program will encourage dairy producers to showcase their farm in the museum by purchasing a plaque that will feature their farm logo. The plaque will also include a QR code that will take users to the farm website or social media page. If you would like to learn more about how you could feature your farm, find more information within this Chronicle.
- **Museum promotion:** During this upcoming fiscal year the committee will also help guide development of an interactive video featuring some of the key elements of the museum. In addition, we will host various



The basement of the National Dairy Shrine Museum will be renovated to highlight the history of dairy farming while also showcasing current management practices. A special section of the museum has been designated for recognition of significant donors.



features of some of the artifacts of the museum throughout the year—a focus on butter makers would be an example. This is intended to help the museum come to life for those who may not be able to make it to Fort Atkinson.

Finance

The guidance of the finance committee helps ensure the financial stability of Dairy Shrine. This committee has been active this year with some important and dedicated work.

The foundational financial stability of the organization centers on the endowment fund which, for the past more than 30 years, was managed by the same firm. This year the committee made the difficult decision to change investment firms with a goal of improving

financial performance over the long term. In addition, this committee has installed an investment subcommittee made up of members of the organization who are not current members of the board. This group will review and guide the investments of the organization, working closely with the investment firm to manage successful outcomes.

Ongoing fundraisers occur throughout the year, with added emphasis on large donors. This includes people who are able to make significant contributions to the organization, or are able to include Dairy Shrine in their estate plans. A special section of the museum has been designated for recognition of these significant donors which includes a plaque commemorating the donation and an area to show a brief video. ●



Farm plaque program

The National Dairy Shrine museum would like to offer dairy farms the opportunity to be recognized on the walls of this national dairy Hall of Fame. Farms that wish to participate can choose one of the following options:



- Dairy Farm Listing: For \$100, list your farm on a plaque prominently displayed inside the museum
- Dairy Farm Plaque: For \$500, have your farm logo etched into a 6" x 9" plaque. In addition, we'll include a QR code that when scanned will take users to your farm website or social media page. This support can be renewed every five years.
- Permanent Dairy Farm Plaque: For \$1,000, put your farm plaque on permanent display inside the museum.

To participate, complete the following information:

Farm Name _____
 Address _____
 City/State _____ Zipcode _____
 Phone _____
 Email _____
 Choice: Listing ___ Plaque ___ Permanent Plaque ___

If choosing a plaque, please send a hi-res logo of your farm as well as a website address for the QR code to info@dairyshrine.org



Cut out this form and send it along with payment to Dairy Shrine, PO Box 68, Fort Atkinson, WI 53538
 Or scan on the QR code to pay online.

The Dairy Shrine Banquet Is Monday Evening!

With the change to the World Dairy Expo schedule, the Dairy Shrine awards banquet will now be held on Monday evening, **October 2nd**. Following is the schedule:

Time:

- 4:00 p.m. Dairy Shrine Annual Meeting
- 5:00 p.m. Reception begins
- 6:00 p.m. Banquet begins
- 6:45 p.m. Awards program begins

Place:

Alliant Energy Center Exhibition Hall, Madison, WI.

Ticket orders can be made one of two ways:
 Online using a credit card at www.dairyshrine.org/banquet

Mail checks to:

National Dairy Shrine
 PO Box 68
 Fort Atkinson, WI 53538
 Email: info@dairyshrine.org

If you know of someone not receiving the newsletter please have them send a current postal or e-mail address to the DS office.

Tickets can be purchased by mail using the form below. Persons whose ticket payments are received by **September 15** will receive an acknowledgment of payment and can pick up their tickets at the Dairy Shrine registration table prior to the banquet. If sending a check in the mail, the check must arrive at the office before **September 30** to be credited as pre-paid. Additional banquet tickets can be purchased at the registration table prior to the banquet. However, it is strongly advised that you reserve your ticket early to ensure you have a spot in the banquet.

I would like _____ Dairy Shrine banquet ticket(s) @ \$40.00 each. My check for \$_____ is enclosed, payable to Dairy Shrine.

Reserve Tickets For:

Name _____
 Address _____
 City/State _____ Zipcode _____
 Phone _____
 Email _____

Members Who Have Affirmed National Dairy Shrine with Donations in Memory or as to Honor

In memory of Linda Cockard

Don and Dorothy Peterson

In memory of Don Seipt

Ken and Beth Raney
Fred Hendricks

In memory of Bob Bignami

Sun Valley Jersey Farm

In memory of George Barlass

Armbruster Brothers
Robert Miller

In memory of Byron Pester

Charles Jacobson
Bruce Lucht
Gregory Knapp
June Freeman
Robert Stelter
Dorothy merriman
Thomas Dykstra

In memory of Chuck Beach

George McKenna

In memory of Leland and Jeanne Ferden

John & Deb Rowekamp

In memory of John Morris

Charles and Judy Iager

In memory of Dr. J. Lee Majeskie

Charles and Judy Iager

In memory of Whitey McKown

Dieter Krieg

In memory of George Heersche

Gene McCoy

In memory of Lloyd Simon

Gene McCoy

In memory of Lewis R. Jones

Julie Ziegler
Fred Hendricks
John and Bonnie Ayars

In memory of Verlo DeWall

Dan Hornickel

In memory of Michael Heath

Charles and Judy Iager

In memory of Larry Tande

Emily and Stuart Rowe

In Honor of Scott Armbrust

Carolyn and Niles Wendorf

In Honor of Don Peterson

Tom Griswold

In Honor of Charlie Will

Gene McCoy

In Honor of Tom Morris

Gene McCoy

In Honor of Ron Eustice

Emily and Stuart Rowe

In Honor of David Kjome

Emily and Stuart Rowe

In Honor of Thomas Landrum

Emily and Stuart Rowe

In Honor of John Meyer

Emily and Stuart Rowe

Memorial donors

Russell Rindsig
John Brooks
Dale Bauman
Allaire Palmer

Blue Ribbon donors

Jodi Hoynoski
Robert Gates
Mark Ground
Richard Witter
Fred Hendricks
Larry Chase
Ray and Margaret Schooley
George Shook
Jim Mode

Champion donors

Alicia Lamb
Michele Ruby
Dan and Karen Bernick

All Star donors

Dr. Sheila McGuirk
Bernie Heisner
Dr. Scott Armbrust





Office of the Executive Director
PO Box 68
Fort Atkinson, WI 53538
(920) 542-1003
info@dairyshrine.org
www.dairyshrine.org

Dairy Shrine Donation Pledge Form

I would like to contribute to enhance the Dairy Shrine mission of encouraging future dairy leaders with scholarships, recognizing National Dairy Hall of Fame individuals and recording dairy events, people and history in a museum.

Name _____

\$25 - \$50 Memorial Donation

Address _____

\$51 - \$100 Supporter Donation

City/State _____

\$101 - \$500 Blue Ribbon Donation

Zipcode _____

\$501 - \$1,000 Champion Donation

E-mail _____

\$1,001 and above All Star Donation

Phone _____

If you are not able to contribute today, please remember Dairy Shrine in the future or as part of your estate planning.

Mail to: Dairy Shrine, PO Box 68 Fort Atkinson, WI 53538 or go to www.dairyshrine.org

